

My|Space

Soundproof Pods



inmind

Redefining Workspaces



My|Space

Walls define space. My|Space redefines it.

My|Space is a customizable acoustic pod – a freestanding, soundproof pod you can place anywhere in your office.

It gives people space to focus, meet privately or recharge – without noisy distractions or costly renovations.

Unlike standard pods, My|Space is tailored to your layout, your style and your workflow.

No fixed sizes. No standard materials. No compromise.

It's more than a pod. It's a space designed with intent – integrated into how you work today and tomorrow.

04

Index

Your Quick Guide to Quiet Confidence

- 07 | **My|Space and the value of silence.**
- 08 | **The Collection.**
- 10 | **My|Space¹**
- 12 | **My|Space^{1s}**
- 14 | **My|Space²**
- 16 | **My|Space⁴**
- 18 | **Technical specifications.**
- 19 | **No standard models. Just one. Yours.**
- 20 | **Finishes, Materials & Feel.**

05



My|Space and the value of silence.

The quietest choice often makes the loudest impact.

In design meetings, critical calls, HR conversations and moments of deep thinking – silence is a requirement.

The most successful workspaces aren't the ones with the most features.

They're the ones that remove the most friction – between thought and expression, between people and privacy.

That's what acoustic privacy does.

It protects focus.

It creates trust.

It gives conversations weight.

My|Space was designed for exactly that.

A calm, soundproof space – placed precisely where silence is most needed.

A room within the room, without building one.

It's not just about noise.

It's about creating space for meaningful work, uninterrupted collaboration, and human connection without disruption.

In a world where everyone's speaking, the real power belongs to those who can choose when not to be heard.

This is how workplaces mature.

This is how trust is built.

This is how you create space for what matters.



The Collection.

Four pods. One principle: silence, shaped to fit.

Every My|Space model is built on the same foundation: true sound insulation, spatial clarity and seamless integration into your environment.

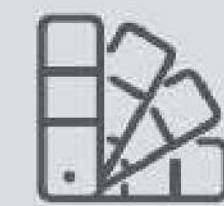
What makes them different is how each one answers a specific need – deep focus,

private conversation, creative teamwork or quiet presence.

Whether you're designing a floorplan or running a business, the right booth is the one that matches the moment you're creating.

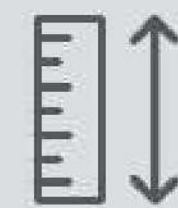
No model is better. Only more right – for your people, your space, your intent.

A rare combination of control, silence and choice.



Color & Material Freedom

Choose from an extensive palette of fabrics, tones, and finishes. Designed to match your brand, your space and your intent.



Truly Custom Sizing

No fixed modules. Each unit is sized to fit your floorplan – precisely, efficiently and without spatial compromise.



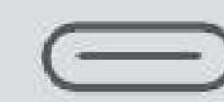
Adjustable Ventilation & Lighting

Every My|Space unit includes lighting and airflow you can control – via touchscreen. Adapt the atmosphere to match the task, the time of day or your personal comfort.



High-Level Acoustic Insulation

certified soundproofing protects focus and discretion – essential for calls and meetings.



Integrated Power & Connectivity

Equipped with sockets, USB-A and USB-C ports – ready for real work, without adapters or hidden installations.



My|Space¹

Focus, on demand.

A quiet, self-contained space designed for individual calls, deep concentration or short resets throughout the day.

Compact in footprint – yet complete in experience.

Ideal for: Private calls • Focused work • Acoustic relief in open areas

The inside

- Each My|Space¹ includes integrated lighting, ventilation, height adjustable stool, work surface and charging – all preconfigured and ready to use.
- No setup. No exposed cabling. Just walk in and think.

Designed to blend in or stand out

- Customize finishes, dimensions and interior materials to align with your space and brand identity.
- From muted fabric tones to sharp architectural contrasts – you define the tone.

Certified silence, refined comfort

- soundproofing keeps conversations private.
- Ergonomic stool makes long calls easier – without visible clutter.

Scan here
view in space.





My|Space^{1s}

Private conversations, uninterrupted.

My|Space^{1s} adds room to breathe.

A compact pod with a touch more presence, designed with a sofa instead of a stool. It's not just a booth for quick calls – a quiet lounge for longer conversations, working with deep focus or a calm teleconference.

Ideal for: Extended video calls • Private unwinding • Deep focus

The inside

- Each My|Space^{1s} includes integrated lighting, ventilation, sofa, work surface and charging – all preconfigured and ready to use.
- No setup. No exposed cabling. Just walk in and think.

Designed to blend in or stand out

- Choose materials and colors that align with your workplace design and culture.
- Configurable dimensions ensure smooth integration into any layout.

Certified silence, refined comfort

- acoustic insulation supports open conversation without external noise interference.
- the comfortable sofa encourages posture and comfort, even during longer use.

Scan here
view in space.





My|Space²

Focused collaboration in a quiet frame.

A space for dialogue with weight and discretion.
Where conversations stay private and focus stays intact.
Balanced, calm and designed to disappear into the architecture.

Ideal for: Team huddles • One-to-one meetings

The inside

- Includes shared worktable, dual seating, lighting, ventilation and full power access – all in a sound-controlled environment.
- Glass elements preserve openness while insulating speech.

Designed to blend in or stand out

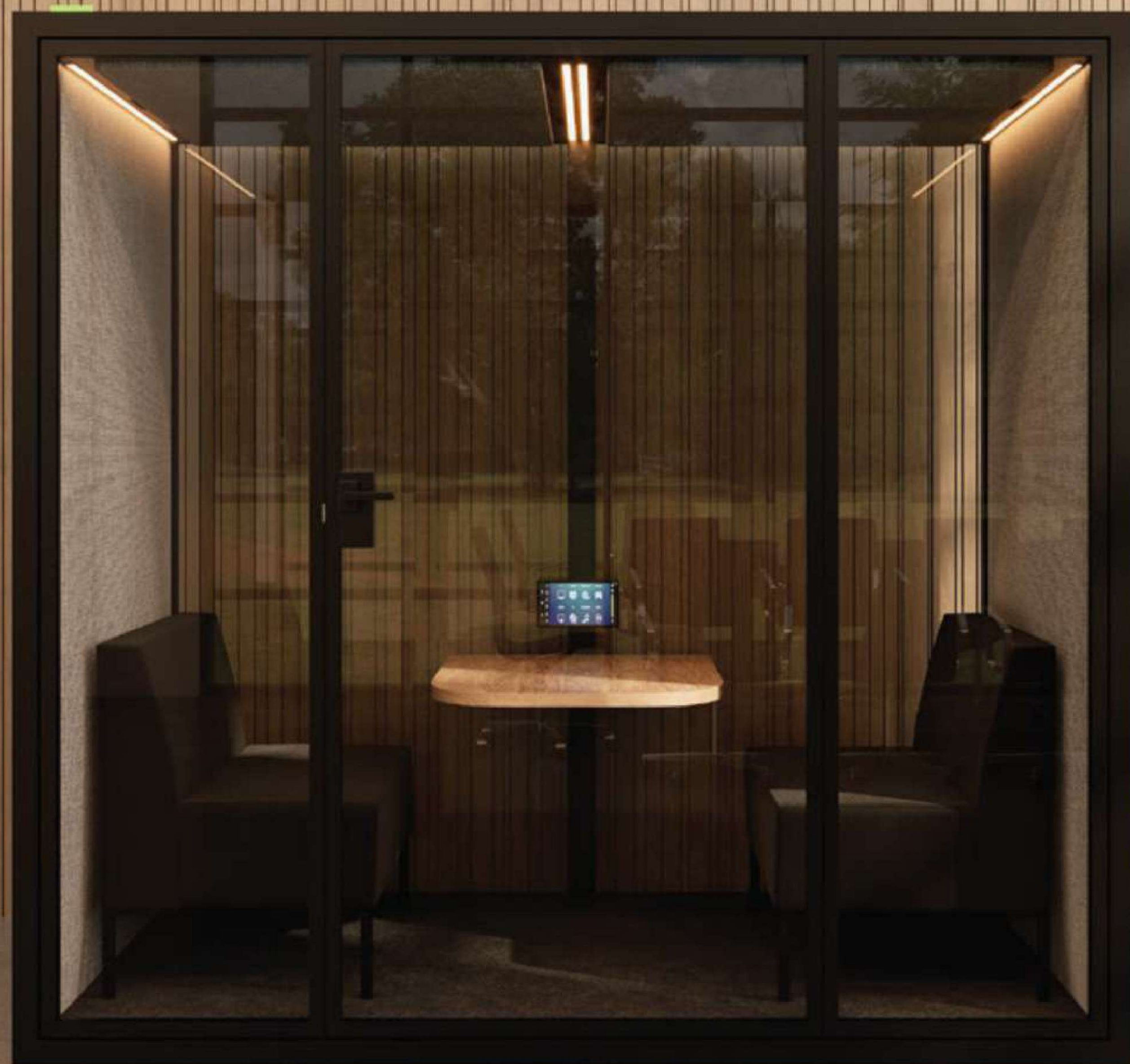
- Flexible finish and color choices to fit brand, mood, or material palette.
- Available in multiple dimensions to fit team size and floor plan.

Certified silence, refined comfort

- Acoustic design keeps discussions focused and confidential.
- Comfort-forward design encourages engagement without overstimulation.

Scan here
view in space.





My|Space⁴

Presence, privacy and leadership – uninterrupted.

A larger-format booth designed for executive briefings and high-stakes collaboration. Spacious, soundproof and fully equipped meeting room.

Ideal for: Leadership meetings • Sales presentations • Cross-functional workshops

The inside

- Furnished with a full-sized worktable, quad seating, adjustable lighting, airflow and device connectivity.

Designed to blend in or stand out

- Finishes, colors and glass options available to match high-end interior concepts.
- Flexible sizing and technology integration on request.

Certified silence, refined comfort

- Best-in-class insulation ensures discretion in all directions.
- Comfortable enough for hours – without sacrificing clarity or elegance.

Scan here
view in space.



Technical specifications.

Model		
My Space ¹ / My Space ^{1s}	My Space ²	My Space ⁴
External Dimensions		
1.15×1.00×2.20m / 1.25×1.00×2.20m	2.20×1.00×2.20m	2.30×1.30×2.20m
Internal Dimensions		
1.00×0.90×2.00m / 1.10×0.90×2.00m	2.05×0.90×2.00m	2.15×1.20×2.00m
Materials & Finish		
Melamine, lacquered or wood veneer external surfaces RAL colour or anodised aluminium frames Interior upholstered panels Optional upholstered back	Melamine, lacquered or wood veneer external surfaces RAL colour or anodised aluminium frames Interior upholstered panels Optional upholstered back	Melamine, lacquered or wood veneer external surfaces RAL colour or anodised aluminium frames Interior upholstered panels Optional upholstered back
Ventilation & Lighting		
3 fans (auto-on) 3000K LED lighting + RGB availability light Motion-activated lighting and LED system Total power: 49.6W	4 fans (auto-on) 3000K LED lighting + RGB availability light Motion-activated lighting and LED system Total power: 79W	6 fans (auto-on) 3000K LED lighting + RGB availability light Motion-activated lighting and LED system Total power: 79W
Features		
Height-adjustable stool with footrest Integrated table Touchscreen control panel Power: Schuko + USB A + USB C	2 sofas + table Touchscreen control panel Power: Schuko + USB A + USB C	2 sofas + table Touchscreen control panel Power: Schuko + USB A + USB C Integrated column with TV mount (optional)


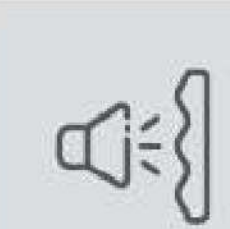
No standard models. Just one. Yours.

Would you believe in tailor-made? We do. Your most creative thoughts will come true in terms of having My|Space into Your Space.

Why?

Because you could discover a new standard in workspaces with our fully customizable sound-isolating booths, ideal for focused meetings, private calls or quiet individual work in dynamic office environments.

My|Space is the only choice.

 <p>Tailor-Made Dimensions Built to fit your space precisely, no matter the size.</p>	 <p>Custom Colors & Materials Choose from a wide palette of finishes and textures to match your brand and interior design.</p>
 <p>Smart & Sleek Design Functional, stylish and designed to enhance collaboration.</p>	 <p>High-Performance Sound Insulation Maintain privacy and minimize noise disruptions in any setting.</p>

We don't believe, necessarily, in one-size-fits-all. Each booth is made to order, so you can design a solution that truly reflects your style and functional requirements.

Transform your workspace with a booth that works the way you do.

Finishes, Materials & Feel.

Materials speak – even when everything else is silent.

Silence isn't just measured in decibels.

It's also a matter of texture, tactility, tone.

That's why every My|Space unit is fully configurable – not just in size or function, but in material expression. Wood, fabric, glass, metal – matte or warm, industrial or soft.

Choose what fits the architecture around it. Or better yet, use it to set the tone for everything else.

No fixed palettes. No color limitation.

Because visual harmony and acoustic performance should never be a trade-off.

You define the atmosphere.

We make it feel exactly as you intend.

INTERIOR FABRICS



LOBSTER - YB087



CALYPSO - YB106



TEQUILA YB038



BRIDGETOWN - YB102



OCEAN - YB100



RUM - YB086



STEEL - YB095



MARTINIQUE - YB004



COSTA - YB026



MARIANNA - YB157



BLUEBELL - YB097



SCUBA - YB089



APPLE - YB096



CAMPECHE - YB301



WINDJAMMER - YB047



ADOBO - YB165



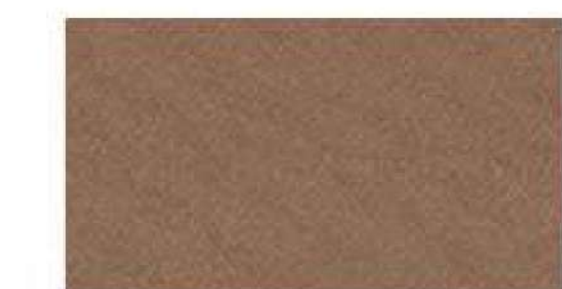
OYSTER - YB107



SOLANO - YB088



ARUBA - YB093



SANDSTORM - YB302



BLIZZARD - YB108



SOMBRERO - YB046



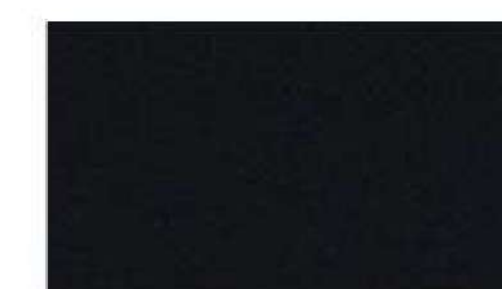
SLIP - YB094



BURU - YB170



PASEO - YB019



HAVANA - YB009

EXTERIOR PLAIN MELAMINE FINISHES



SOFT BLACK
U899 ST9



DIAMOND GREY
U963 ST9



TRUFFLE BROWN
U748 ST9



STONE GREY
U727 ST9



PEARL GREY
U763 ST9



TYROLEAN BLUE
U504 ST9



DENIM BLUE
U540 ST9



REED GREEN
U604 ST9



RUSTY RED
U335 ST9



ANTIQUÉ ROSE
U325 ST9

EXTERIOR WOOD MELAMINE FINISHES



ANTHRACITE
FINELINE METALLIC
H3190 ST19



DARK GREY
FINELINE
H3198 ST19



MEDIUM GREY
FINELINE
H3197 ST19



WHITE
FINELINE
H3195 ST19



BROWN WARMIA
WALNUT
H1307 ST19



BLEACHED
VICENZA OAK
H3152 ST19

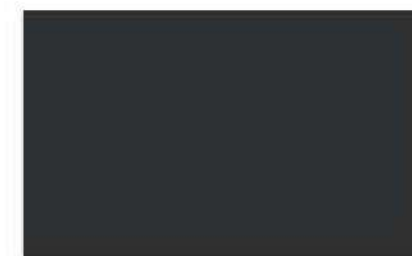
FRAME FINISHES



ANODIZED KELTA
IRON



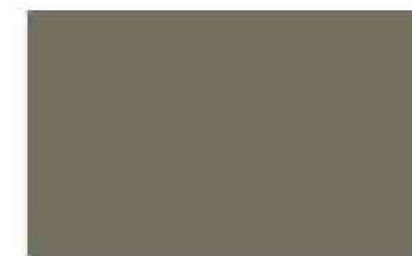
ANODIZED KELTA
LIGHT



SIGNAL BLACK



IRON GREY



BEIGE GREY



SAPPHIRE BLUE



BRILLIANT BLUE



PASTEL BLUE



RESEDA GREEN



PASTEL VIOLET



WHITE RAL

—

Not a booth. A choice. My|Space.



inmind

Redefining Workspaces

—

ATHENS

342 Kifsias Ave. & 58 Pindou str,
15233 Chalandri
+30 210 6849990

THESSALONIKI

19 Marinou Antipa str,
555 35 Pilea
+30 231 047 2584

info@inmind.com.gr
inmind.com.gr