



**inmind**

thinking  
about project



# Polar Perch, designed by Pearson Lloyd, 2013







# Polar Perch, designed by Pearson Lloyd, 2013

## Polar Perch

The Polar project began in 2006 with the creation of a multifunctional piece that could be used as a seat and an occasional table. Since then it has evolved into a complete furniture collection that draws its inspiration from nature and from the study of contemporary spaces. In the context of this "work in progress", Polar Perch introduces an original pair of curved elements of different heights and complementary shapes. The lower element can be used as a sofa, while the higher one offers seating support. An innovative furnishing concept with scope to create innumerable solutions for the widest range of communal areas.

## Pearson Lloyd

Pearson Lloyd is one of the leading names in contemporary British design, and this multidisciplinary studio works in a wide range of sectors: from furnishing to public spaces to brand development. Established by Luke Pearson and Tom Lloyd in 1997, the studio has received numerous acknowledgements and accolades in both Europe and the United States. The British design duo write regularly for major design magazines, as well as acting as "visiting lecturers" at the École Cantonale d'Art in Lausanne.



Luke Pearson & Tom Lloyd





## Polar Perch, designed by Pearson Lloyd, 2013

### Sustainability

All Tacchini products are manufactured in the verdant area of Brianza between Milan and Como, with its strong tradition of Italian manufacture and craft. All the materials and semi-finished products come from a zone of about 50 km around the Tacchini plant and this, as well as allowing direct control of their quality, also enables the pollution and energy consumption deriving from their transport to be reduced to a minimum.

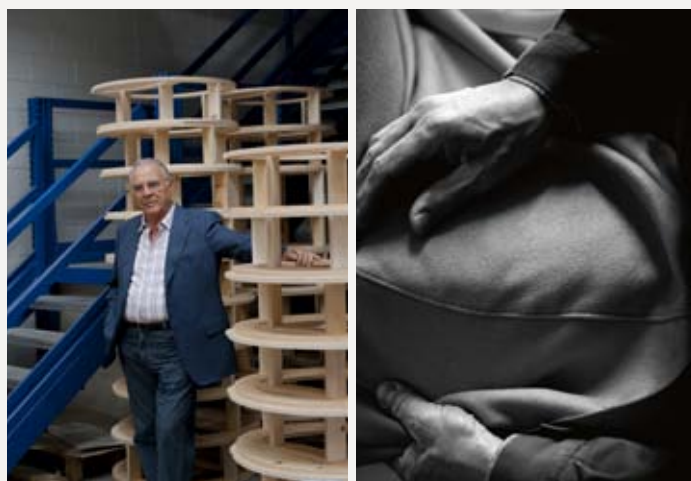


A special feature which makes Tacchini an even more special name, also as regards the eco-sustainability of the furniture.

### Tacchini and the Environment

Giving space to ideas and quality to space: a central philosophy that Tacchini expresses not only through its products, but also throughout every aspect of the company. It's an approach embodied in the new headquarters, designed by Roberto Grossi, that lie in the countryside between Como and Milan.

Established in 1965 by Antonio Tacchini, in one of the richest moments for design and Italian industry development, the company stood out for high quality and its indissoluble relation with contemporary design right away.



Tacchini is nowadays a reference point in furniture business, thanks to its constant stylistic and functional research, project and product culture, care for people and environment. From 2012 Tacchini implemented a certified quality and environmental system according to the law UNI EN ISO 14001:2004. Tacchini's Quality Management System guarantees rigorous testing in every process' step, staff involvement at all levels, satisfaction and transparency with suppliers and customers. Tacchini's products are created in compliance with most recent and widespread International standards, in a safe and healthy work environment, using Italian or European materials and patented technologies.



# Polar Perch, designed by Pearson Lloyd, 2013

## Wood

Wood is a renewable raw material. All products derived from wood, such as for example plywood, have the advantage of being able to be machined more easily than wood and do not deform. The timber we use – solid or plywood – comes mainly from European and Russian forests and is seasoned to specific values of humidity with tests. Most of the structures of the products in the collection have a frame in solid pine or ash, or in beech or poplar plywood.

## Polyurethane

Flexible expanded polyurethane is a solid elastic polymeric material with open cell structure. It is a non-toxic material and above all free from ozone-damaging components. Production and processing of the polyurethane we use meet the objectives of the new policy of ensuring the protection of human health and of the environment. We focus in particular on the choice and use of the types of density of polyurethane suitable for preserving over the years the features of load capacity, elasticity and resilience. For products used in public spaces flame-retardant expanded polyurethane is chosen, tested and certified according to international regulations.

## Foam

Similar to polyurethane, foam is used for moulding products with special and organic shapes. It is a material which is highly resistant to ageing and flames. Its appearance at the edges is clean, compact. All products made with a foam structure offer a solution with extraordinary comfort.

## Down

All our cushion products contain down washed and sterilised according to directives from the Italian health ministry. We only use carefully selected goose and duck down that complies with national and international industry regulations and is subjected to strict tests throughout the production process. The down is also anti-static and anti-allergy, absorbs moisture and insulates, and is also considered naturally flame retardant.

## Metal

The need to combine complex yet lightweight shapes with resistant materials necessarily involves the use of metals such as steel and aluminium. Products in polyurethane foam are made with an inner steel frame for adding strength to the structure. The bases are in tubular metal which can be chromed with a gloss or satin finish or painted with epoxy powders.

## Elastic belts

The elastic belt used on the seats of our upholstered products is a component to be chosen with care in order to ensure adequate elasticity and springing for the dimension and the structure of the product. We use plaited elastic webbing to add greater comfort and resistance to weight stresses.

## Joints

All products in the collection with reclining mechanisms are controlled by mechanical joints, designed to withstand heavy loads. The lamellar structure with double internal mechanism in special carbon steel allows outstanding resistance to loads and wear.

## Marble

Marble is a natural material obtained through a metamorphic process from sedimentary rock such as limestone or dolomite, causing crystallisation of the calcium carbonate. The specific features of the material can be seen in the marble we use which is worked by artisans with machinery and polished with natural waxes which go to respect the actual essence of the nature of the marble.

## Laminate

The laminates used for producing our table tops are high-pressure laminates whose outstanding features of durability and resistance to every kind of strain are guaranteed at European level. In greater detail, full-colour laminate is a material coloured at the surface and throughout the thickness with predefined colours and is made up of sheets of paper impregnated with thermosetting resin and subjected to the combined action of heat and high pressure.

## Polypropylene

Polypropylene has high features of resistance to chemical agents, can be welded and is normally used with temperatures between +5°C and + 90°C. PP has low mechanical resistance to traction, bending, compression, abrasion.

## Glass

Among the types of plate glass (or simply crystal) we use, the one used on the small black tables is the linea azzurra by Glaverbel, suitable for all processes for the building, decoration, automobile and hi-tech sectors. It requires a float manufacturing process, which means that the faces of the glass are perfectly flat and parallel. The other line, used instead on the small white tables, is the extra-clear Diamant glass from Saint Gobain, an ideal medium for enamelling and capable of ensuring an impeccable result. The neutral colour of the edge also makes it particularly prized in the furniture industry.

## Fabric and faux leather

The sample range of fabrics at Tacchini, a company which works mainly in the contract sector, consists of high-quality articles with very high technical performances able to meet the most demanding industrial standards. New and researched materials which range from natural types such as cotton, linen, wool and velvet to a vast assortment of technical materials such as luxury and innovative eco-leather with wide and diversified colour ranges and high-quality fabrics for outdoor use. This is in addition to a vast collection of leather of different types and categories in a wide range of colours.

## Leather

The leather we use is the result of years of experience and research and is produced and processed entirely in Italy. We pay particular attention to selecting the best skins from Italian (European) livestock in order to guarantee you the excellent quality of the upholstery which makes your product unique and exclusive. The natural beauty of the leather is highlighted by those inimitable irregularities which are a guarantee of a genuine product.

## Aniline leather

The aniline leather that we offer among the range of leathers in our collection is full grain, aniline dyed and smooth. It is characterised by its silky, round and full-bodied hand. The delicate and enveloping feel is maintained over the years. The quality of this product comes mainly from the selection of the best European raw hides and is then enhanced by tanning and processing performed entirely in Italy.



# Polar Perch, designed by Pearson Lloyd, 2013

## Recycling, packaging, reuse of products

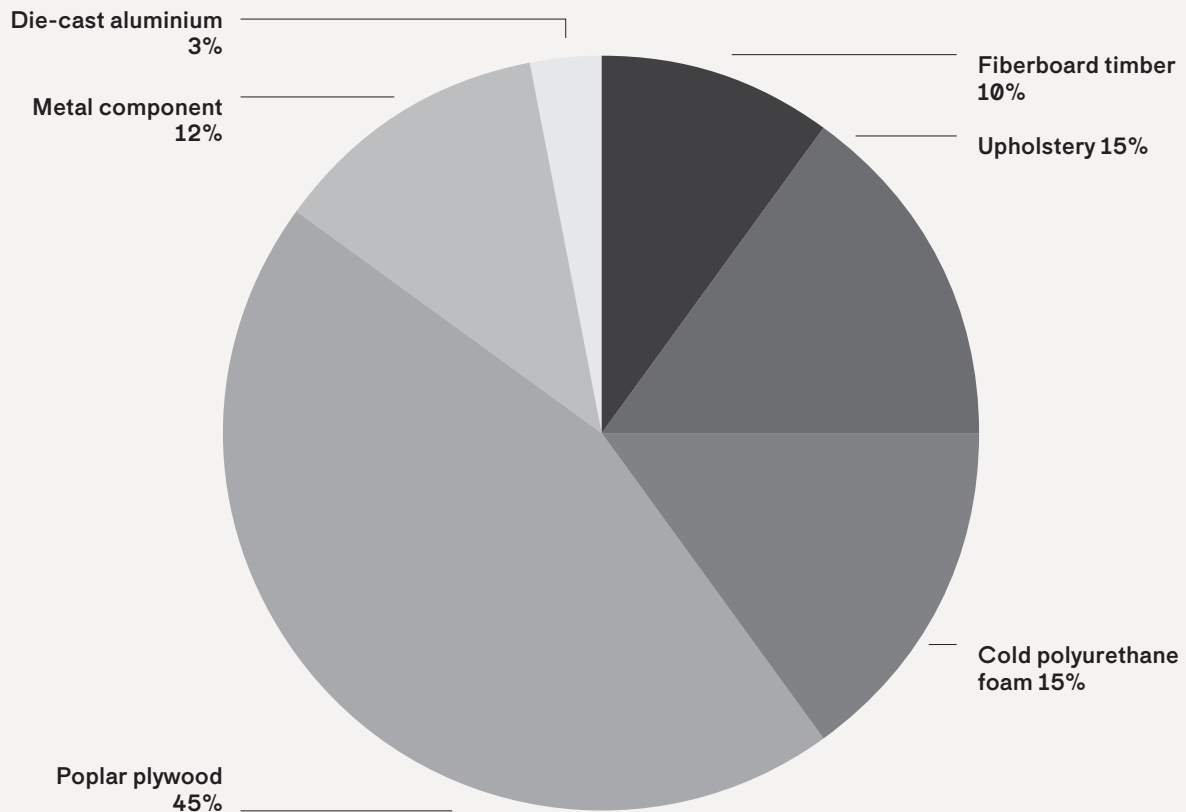
## Recyclability

## Packaging

Once a product reaches the end of its life cycle it has to be eliminated.

Both Polar Perch elements are **100%** recyclable when fully separated. Tacchini undertakes on-going research and development, with efforts made to introduce products which are a perfect combination of function and safety without jeopardizing the final design of the same articles. During production attempts are made to minimize noise and emission levels and to reduce rejects as far as possible. All the single materials which make up the production process, once disassembled, can be reused several times, maintaining a high quality standard.

Polar Perch element is dispatched already assembled. It is protected by tissue paper and cellophane to protect the covering from dust and direct contact with the cardboard. The product is packed in rigid cardboard boxes suitable for world export. Manufacture of the packaging observes the criteria for recovery both as recycling and energy recovery and composting.







# Polar Perch, designed by Pearson Lloyd, 2013

## Measurements

POLAR PERCH

by Pearson Lloyd

Modular System (Sofa)

Year: 2013



Low Element  
W 207 cm  
D 84,5 cm  
H 46 cm



High Element  
W 220 cm  
D 79 cm  
H 70 cm

## Materials and Finishes

### INTERNAL FRAME

Poplar plywood 18mm thick  
+ cold polyurethane foam +  
fiberboard timber.

### PADDING

Polyurethane foam.

### CONNECTION PLATE

Steel plate 10 mm, 360 mm  
long, with rubber base 4 mm  
thick and two steel tubes  
diameter 30 mm.

### BASE

Die-cast aluminium feet.



T23 Shiny Chromed

### UPHOLSTERY

Non removable cover.

## Example of Configurations

High — High



Low — Low



High — Low





# Polar Perch, designed by Pearson Lloyd, 2013

---

## Cat. A

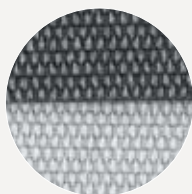
Alyssa



---

## Cat. Extra

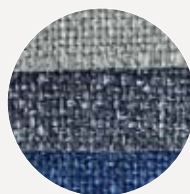
Emblic



---

## Cat. Top

Thesium



---

## Cat. Lusso

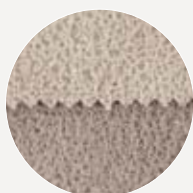
Liko



---

## Cat. C

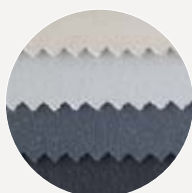
Calla



---

## Cat. Extra

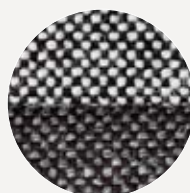
Erika



---

## Cat. Top

Trifolium



---

## Cat. Pelle/Leather

Pelle/Leather



---

## Cat. Extra

Euphorbia



Tacchini Product Files:  
Polar Perch, designed by Pearson Lloyd



Tacchini Italia Forniture Srl  
19, v. Domodossola, 20822 Baruccana di Seveso (MB), Italy  
T. +39 0362 50 41 82 F. +39 0362 55 24 02  
E-mail: [info@tacchini.it](mailto:info@tacchini.it) — [www.tacchini.it](http://www.tacchini.it)

© Tacchini Italia Forniture Srl





**inmind**

256, Kifisias Ave.  
15231 Chalandri, Athens

+30 210 614 1550  
info@inmind.com.gr

**inmind.com.gr**