

**inmind**

thinking  
about project



---

# VISIO

MOBILE GLASS WALL

ESPERO

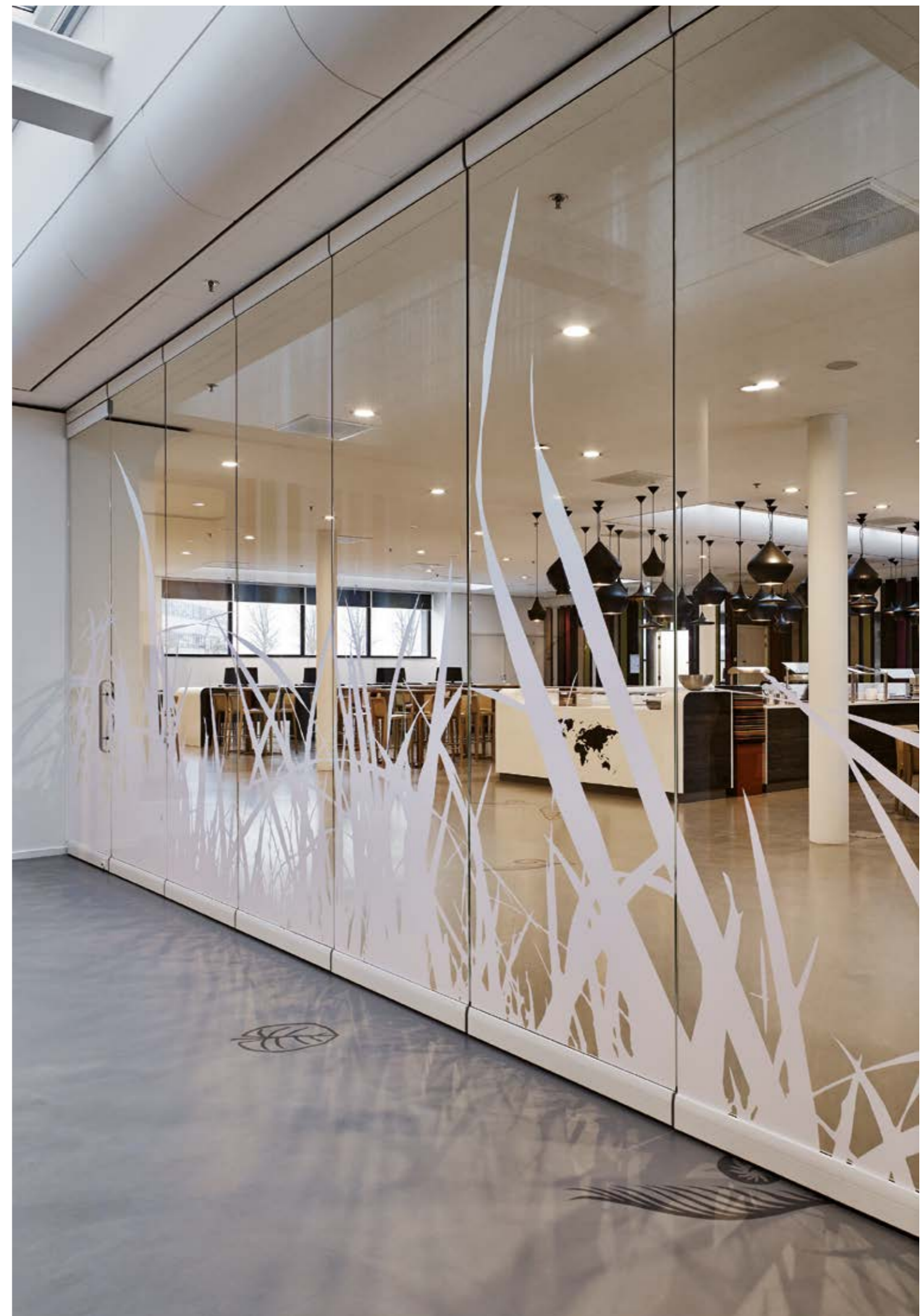


DO MORE WITH **M<sup>2</sup>**

A word cloud consisting of the phrase "MOBILE WALLS" repeated multiple times. The text is arranged in a dense, overlapping pattern, with some words oriented horizontally and others vertically. The font is a bold, sans-serif typeface. The colors are primarily black and dark grey, with some lighter grey and white highlights, giving it a modern, graphic feel. The overall shape is roughly rectangular, with the text filling most of the space.

Espero is ISO 9001 and 14001 certified (the international standards for quality and environmental management systems). Striving to achieve maximum quality and causing as little environmental impact as possible are highly valued in all layers of the organisation

**ESPERO**



The new head office of FOX Vakanties was designed according to the cradle-to-cradle principle. The interior is characterised by sustainability, light and transparency. Two Visio mobile glass walls have been seamlessly integrated in the office environment and are contributory factors in attaining the Breeam qualification 'Excellent'. The horizontal profiles of the walls with built-in suspension and locks offer the largest possible glass surface area and create an optimal sense of space. The walls have a print depicting wind-blown grass to illustrate the sense of freedom associated with holidays.

# VISIO



1 Visio with a two-point suspension parked in an alcove

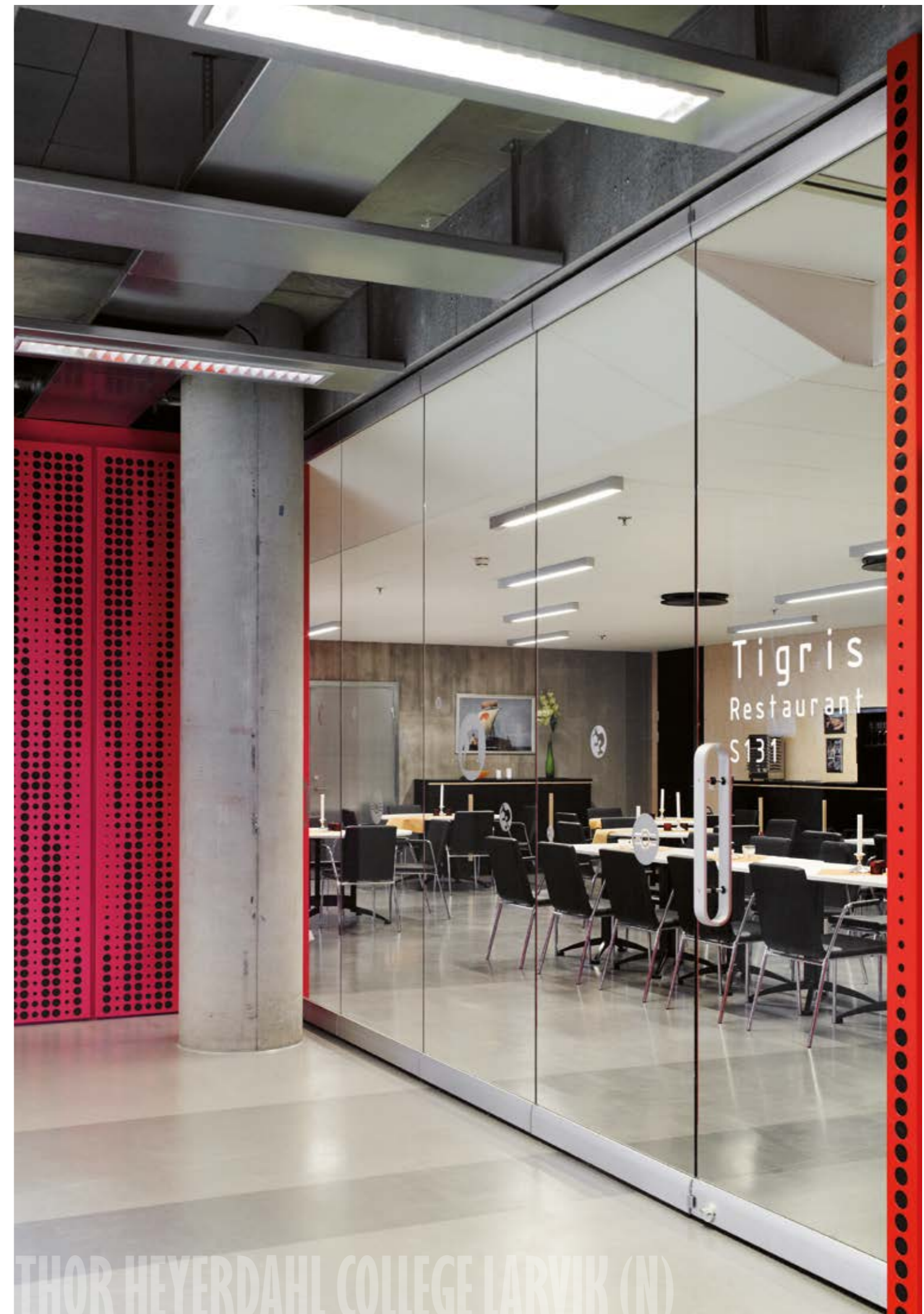
2 door lock on the top

3 glass panels completely printed

# VISIO

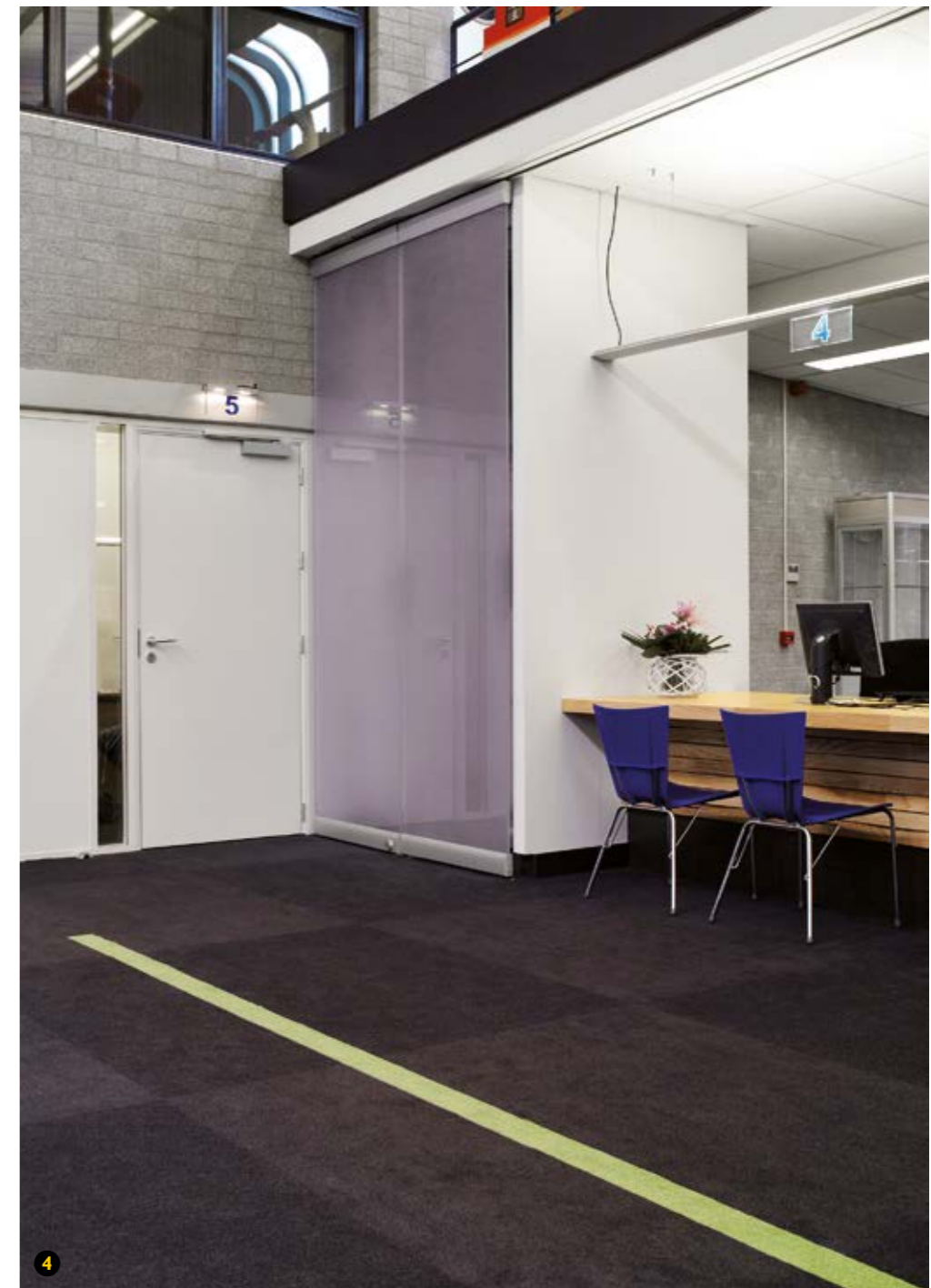


Flexibility is a key principle of the open learning environment of the Thor Heyerdahl College in Larvik. The architecture is intended to stimulate widely ranging activities such as informal meetings, teaching and working in quiet concentration. Mobile walls make it possible to rearrange the available space to suit the needs of a particular moment. The architects (Schmidt Hammer Lassen) deliberately chose Visio glass walls for the college's central quadrangle. This transparent, safe and user-friendly solution enables optimal utilisation of the multi-functionality of this impressive space without diminishing the powerful spatial effect.



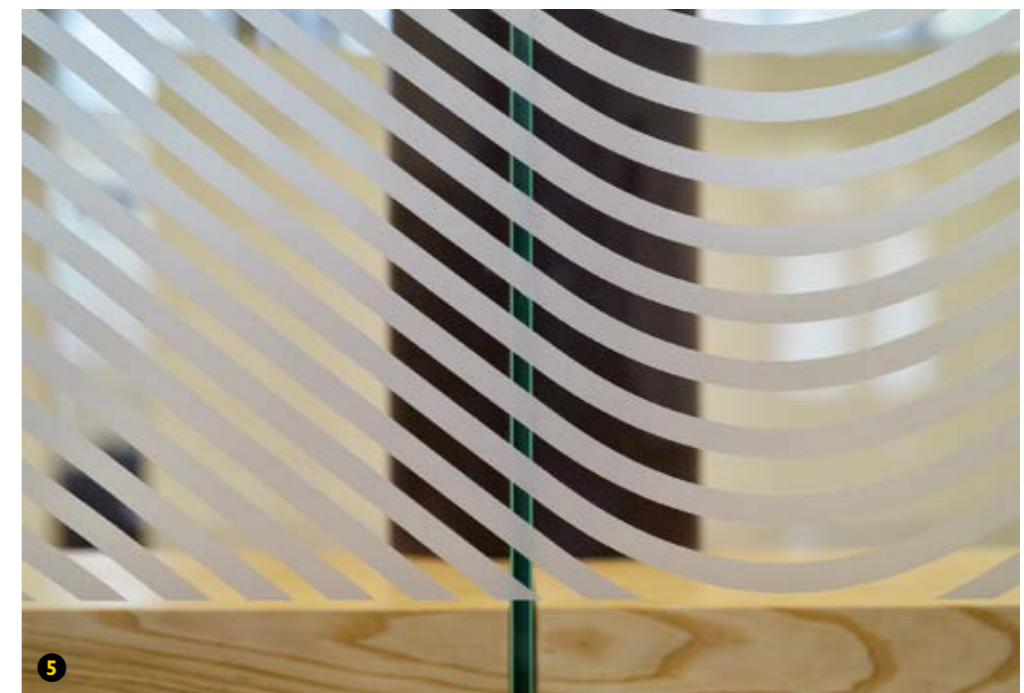
# VISIO

'Closed, but not sealed off' is how to describe the imaginative use of the Visio wall in the hall of the municipal offices in Rozenburg. During opening hours, the wall is simply moved aside and parked in a purpose-built alcove. When the building is closed, the wall is moved into position without negatively impacting on the accessibility and transparency of the interior. The Visio wall with a decorative strip of foil at eye level subtly obstructs the view in precisely the right way to meet the functional requirement of guaranteeing the privacy of visitors and staff.



4 wall parked in the space behind glass doors

5 decorative, functional foil placed on the glass



Classroom and individual teaching, but still able to keep a watchful eye on the children. The use of Visio glass walls made this possible at the Juliana school in Dordrecht. The transparency of the glass ensures that the teachers in the classrooms can keep an eye on the open spaces where children are working on projects individually or in small groups. This works both ways and the children can easily make eye contact when they need a teacher's help. By simply removing or positioning one or more mobile wall sections, the space can be continually rearranged to suit the needs of a particular moment.

# VISIO



6 optimal view of different areas

7 elegant corner solution

JULIANASCHOOL DORDRECHT (NL)

# VISIO



communication panel double door panel

8 glass panels finished with white vertical frame profile

9 standard door handle, detail white vertical frame profile



standard door handle

option: lock case



option:  
vertical rubber draft  
excluder

option:  
vertical frame profile

## Key features and advantages:

- optimal utilisation and view of the space
- panels can be individually locked in position for maximum safety
- flexibility due to the wide choice of door and panel options
- Visio mobile glass walls can be quickly, easily and quietly positioned and parked
- wide range of possible set-ups: straight line, with corners and segmented
- the track can be fitted to all ceiling types without problems
- available with single-point or two-point suspension

## Options:

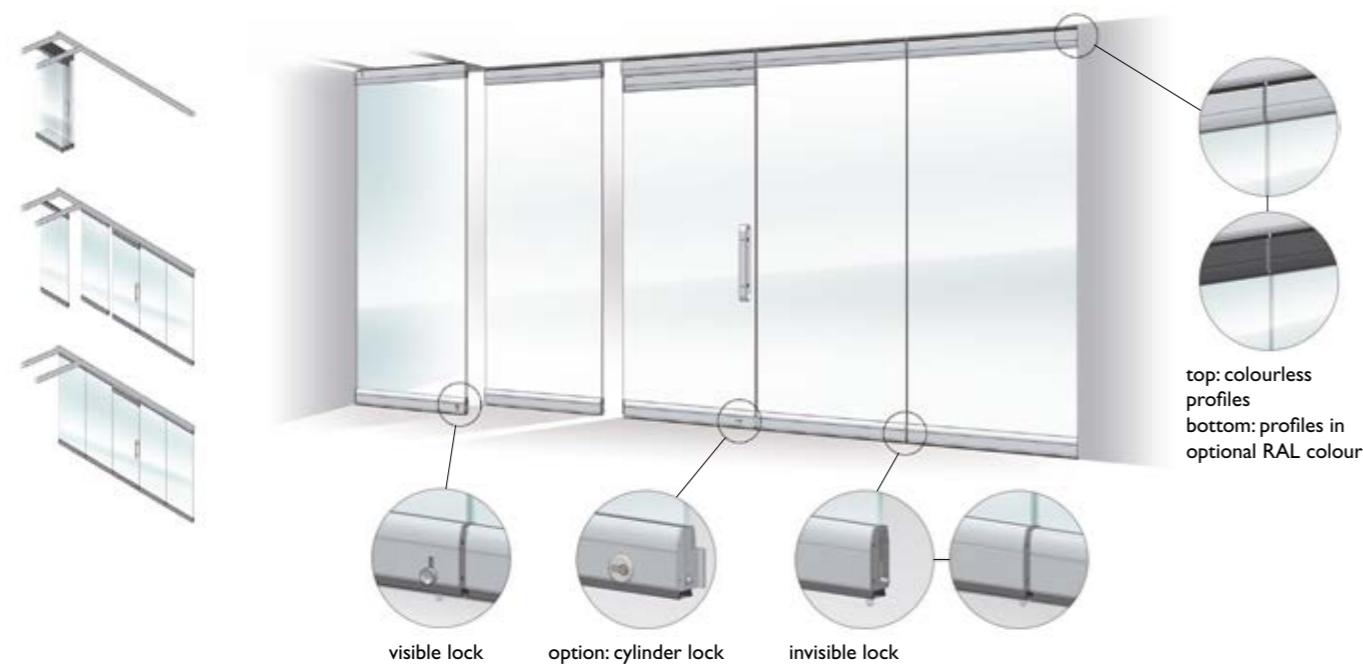
- the top and bottom of the panels can be fitted with a cylinder lock
- a rubber draft excluder or a frame profile can be fitted on the edges of the glass panels

ESPERO

# VISIO

| TYPE                            | VISIO   |
|---------------------------------|---|
| Use                             | Transparent mobile glass wall, suitable for partitioning spaces without losing visual contact between them.   |
| Panel dimensions:               |   |
| Profile thickness               | 45 mm   |
| Glazing thickness               | 10 mm: with panel heights up to 3,000 mm<br>12 mm: with panel heights of 3,000 to 3,500 mm  |
| Height                          | Maximum 3,500 mm  |
| Width                           | Maximum 1,250 mm  |
| Door panel                      | Clearance width 866 mm with a standard door opening width of 950 mm.  |
| Frame construction              | Horizontal solid (technically anodised) aluminium profiles in which the glass is supported.   |
| Panel appearance                | Visible horizontal aluminium profile. Standard version technically anodised aluminium.<br>Available in any preferred RAL colour.  |
| Glazing                         | 10 – 12 mm toughened glass compliant with EN 12150 and EN 572-2   |
| Finish                          | The glass can be finished with a (partially) matt or coloured coating.<br>The glass can also be sandblasted or covered with silkscreen printing.  |
| Weight                          | 26 kg/m <sup>2</sup>  |
| Panel interconnect              | The horizontal profiles connect centrally, which prevents the glass from becoming damaged.  |
| Top and bottom panel connection | The horizontal profiles fitted with draft excluder strips.  |
| Side connection (option)        | Aluminium 'U' profiles and/or draft excluder strips.  |
| Track                           | Solid aluminium profile (technically anodised colourless), for the single-point track measuring 110 x 78 mm (w x h) and the two-point track measuring 110 x 98 mm (w x h).<br>Can be painted in any RAL colour if required. |
| Wheels / Trolleys               | Bearing-mounted with wear-resistant plastic running surfaces that ensure the panels move smoothly and quietly. Single points: max. 240 kg panel weight / Two point: max. 400 kg panel weight.                               |
| Static behaviour                | The panels are top-hung in the track and must not be subjected to any external loads.   |
| Environmental conditions        | Suitable for indoor applications (version for outdoor application available on request).  |

Other specifications available on request. Espero reserves the right to make changes without prior notification. For the most recent version, go to: [www.espero.nl](http://www.espero.nl).



Espero prioritises customer satisfaction. The production process, modern advanced machinery, the product quality, the expertise and professionalism of our employees; everything has been designed to live up to and, wherever possible, to exceed the expectations of our customers.

By maintaining frequent and intensive contact with clients and suppliers, we can quickly and flexibly respond to new wishes and requirements with innovative products. Our employees work in a pleasant and safe environment in the office, in the factory and on the road. They receive the right support to encourage their personal development and take (additional) training courses in order to guarantee the high quality and excellent service for which Espero is known now and in the future.

ESPERO

# ESPERO

## MOBILE WALLS



The mark of  
responsible forestry  
FSC® C102608

Enquire about our FSC®- certified  
products.

*visiting adress*

**Espero BV**  
Sluisweg 26-28  
5145 PE Waalwijk  
The Netherlands

*postal adress*

**Espero BV**  
Postbus 576  
5140 AN Waalwijk  
The Netherlands

**t** +31 (0)416 338955  
**f** +31 (0)416 332635  
**e** [info@espero.nl](mailto:info@espero.nl)  
**i** [www.espero.nl](http://www.espero.nl)

Ask for the documentation for more  
information about our other wall systems:  
Sonico, Visio 100, Flexio, Uno&Duplo  
and Skyfold.



# VISIO 100

MOBILE GLASS WALL

ESPERO

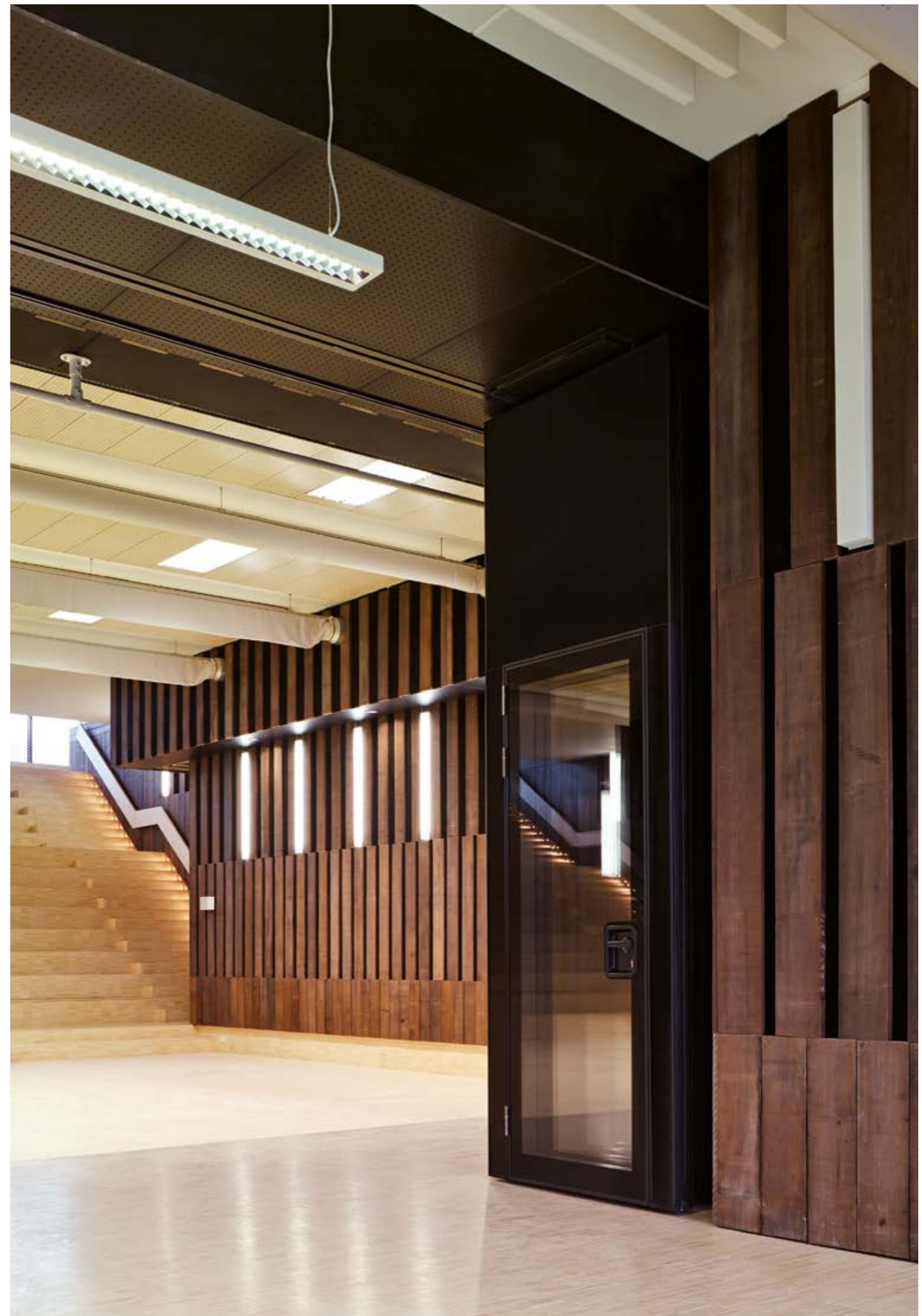


# DO MORE WITH M<sup>2</sup>

A word cloud featuring the phrase "MOBILE WALLS" repeated multiple times. The text is rendered in a bold, sans-serif font. The words are arranged in a dense, overlapping pattern, with some instances being significantly larger and more prominent than others. The orientation of the text varies, with some words appearing horizontally and others rotated vertically or at diagonal angles. The overall effect is a textured, three-dimensional appearance, suggesting movement and depth. The background is a solid, light gray, which provides a neutral backdrop for the white and light gray text.

Espero is ISO 9001 and 14001 certified (the international standards for quality and environmental management systems). Striving to achieve maximum quality and causing as little environmental impact as possible are highly valued in all layers of the organisation.

**ESPERO**



Brede School Houthaven is a carbon-neutral multifunctional facility that accommodates, among other things, two primary schools, a day-care centre, an out-of-school care centre and playgroups. Because most of the interior (designed by Marlies Rohmer) can be flexibly partitioned, the building can be optimally utilised and various activities can be interconnected whilst retaining their own functionality. In this way, the two primary schools decided to place their assembly halls next to each other separated by an Espero Visio 100 Elite mobile glass panel wall, which allows a one large open space to be created for special activities.

# VISIO 100



1 Visio 100 Elite two-point wall set up between two assembly halls

2 door handle, perfection down to the finest details

3 simple operation with the patented quick-locking mechanism

4 the floor connection of the panels

# VISIO 100

Two versions of Espero's glass mobile panel wall are available: The Visio 100 and Visio 100 Elite.

The main difference is the finishing of the glass. The Visio 100 has transparent glazing without a frame and the Visio 100 Elite is fitted with a frame-lacquered glazing.

The Visio 100 with completely transparent glass and cassettes made from anodised aluminium has a modern industrial appearance. The basic and end-panels are finished with glass, the other panels in a finish of choice (similar to the Sonico 100).

The cassettes, which house the construction and operating mechanism, and the aluminium wall profiles can be optionally supplied in a RAL colour of choice.

The Visio 100 Elite is fitted with frame-lacquered glazing in an RAL colour of choice. The basic, door, end and communication panels are supplied with frame-lacquered glazing (transparent); the other types of panels are supplied with painted glass (non-transparent). This finishing makes the wall look even more elegant.

The cassettes and wall profiles can be optionally supplied in any RAL colour if required.



5 the look of the profiles, operating key

6 Visio 100: completely transparent glass and natural aluminium cassette

7 Visio 100: completely transparent glass and cassette in colour (option)

8 Visio 100 Elite: glass with blue painted frame and natural aluminium cassette

9 Visio 100 Elite: glass with blue painted frame and blue painted cassette

# VISIO 100



The halls in the Brede School Houthaven in Amsterdam can be partitioned in various ways by using mobile walls. The school's architecture enables various activities to take place before, during and after the official lessons, and is also intended to facilitate cooperation between different groups of users.

For the mobile walls in the corridors, Visio 100 Elite glass walls were deliberately chosen in order to provide sufficient daylight. The classrooms are separated by Espero Sonico 110 walls

Espero's patented quick-locking mechanism guarantees ultra-smooth operation for the end users. The operating key only has to be given half a turn to unlock or secure the panels in position. Once unlocked, the separate panels can be quickly and noiselessly moved along the overhead aluminium track and can be easily set up or stowed away.

The sound insulation is guaranteed by lockable operation seals located at the top and bottom of the panels. The vertical profiles are fitted with acoustic rubber seals.



The eye-catching town hall in Hardenberg is one of the most sustainable government buildings in the Netherlands. The design, the applied state-of-the-art engineering techniques and use of natural resources contribute positively to the building's low energy consumption.

One aspect people always notice when entering the building is the open view of the main council chamber. Espero's mobile glass panel wall enables direct contact between citizens and government. The high sound insulation rating of the wall makes it possible to carry out various activities on both sides of the glass without having to turn down the volume.

# VISIO 100



10 wall between the public area and the council chamber

11 moving the panels

12 panels with a two-point suspension parked in an alcove

13 council chamber



# VISIO 100

All glass finishes customarily used in interior design can be applied to the Visio 100 and Visio 100 Elite, for example, etching, sandblasting or colouring. Prints or foil can also be placed on the glass without problems.

The glass for a Visio 100 is removable, which means it can also be cleaned on the inside. The possible options include built-in venetian blinds.

**14** built-in venetian blinds

**15** operating button for venetian blinds

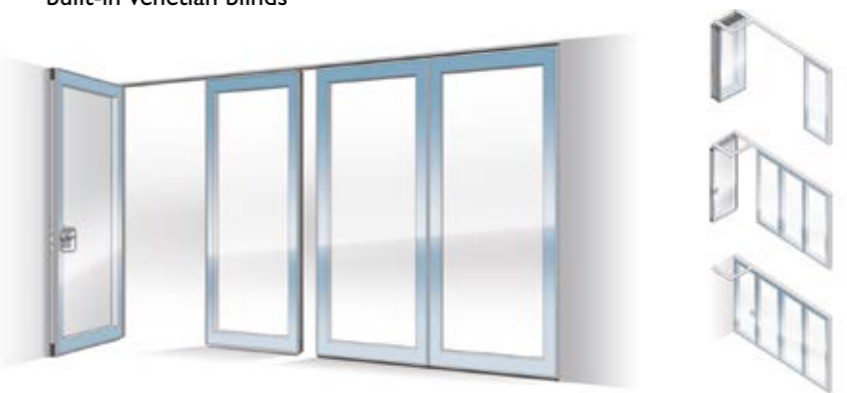


## Key features and advantages:

- optimal transparency
- individual mobile panels with numerous set-up and positioning possibilities
- panels can be individually locked in position for maximum stability and safety
- simple and noiseless operation
- sound insulation rating from 42 dB and 50 dB (laboratory tested)
- removable glass (not for Visio 100 Elite)
- no width limit
- the track can be completely integrated in a ceiling system

## Options:

- semi-automatic operation
- built-in venetian blinds



ESPERO

# VISIO 100

| TYPE                                  | VISIO 100   |                      |                      |                      | VISIO 100 Elite  |                      |                      |                      |
|---------------------------------------|---|----------------------|----------------------|----------------------|--|----------------------|----------------------|----------------------|
| Use                                   | Robust version with average sound insulation ratings, suitable for all situations in which transparency is required.  |                      |                      |                      |  |                      |                      |                      |
| Panel dimensions:                     |   |                      |                      |                      |  |                      |                      |                      |
| Thickness                             | 107 mm  |                      |                      |                      |  |                      |                      |                      |
| Height                                | maximum 3,500 mm, other dimensions on request   |                      |                      |                      |  |                      |                      |                      |
| Width                                 | 700 – 1,240 mm  |                      |                      |                      |  |                      |                      |                      |
| Frame construction                    | Self-supporting aluminium frame, consisting of solid aluminium profiles with internal steel bracing. The glazing unit is mounted in rubber seals in the aluminium frame. Internal aluminium cassette which houses the construction and operating mechanism. |                      |                      |                      |  |                      |                      |                      |
| Panel appearance                      | Visible horizontal and vertical aluminium profile.<br>Available in any preferred RAL colour.<br>Basic and end panels in glass, other panels in finish of choice (similar to the Sonico 100).<br>Glass transparent, without frame.                           |                      |                      |                      | Visible horizontal and vertical aluminium profile.<br>Available in any preferred RAL colour.<br>Basic, door, communication and end panels with frame-lacquered glass (transparent), other panels in glass (non-transparent). Glass with lacquered frame. |                      |                      |                      |
| Cassettes                             | Standard anodised aluminium.  |                      |                      |                      | Available in any preferred RAL colour.   |                      |                      |                      |
| Glazing                               | 6 mm toughened glass (NEN-EN 12150) or 8 mm layered glass (NEN-EN ISO 12543)  |                      |                      |                      |  |                      |                      |                      |
| Sound insulation rating (lab. tested) | 42 dB   | 46 dB                | 48 dB                | 50 dB                | 42 dB  | 46 dB                | 48 dB                | 50 dB                |
|                                       | The sound insulation values were obtained in tests performed by DIN EN ISO 10140-2:2010 certified laboratories.   |                      |                      |                      |  |                      |                      |                      |
| Weight                                | 44 kg/m <sup>2</sup>  | 44 kg/m <sup>2</sup> | 54 kg/m <sup>2</sup> | 54 kg/m <sup>2</sup> | 44 kg/m <sup>2</sup>   | 44 kg/m <sup>2</sup> | 54 kg/m <sup>2</sup> | 54 kg/m <sup>2</sup> |
| Panel interconnect                    | Dual construction based on the tongue and groove principle: all the panels have a male/female profile with a magnetic strip to ensure consistent, effective sound insulation.   |                      |                      |                      |  |                      |                      |                      |
| Top and bottom panel connection       | Solid aluminium operation seals fitted with rubber sealing profiles.  |                      |                      |                      |  |                      |                      |                      |
| Operating mechanism                   | The quick-locking mechanism is very easy to use (half turn) and the patented operating sequence for the telescopic panel (= end/closing panel) means the wall can be set up and put away quickly and smoothly.  |                      |                      |                      |  |                      |                      |                      |
| Semi-automatische opration            | The locking mechanism is operated by pressing a button that pulls out or pushes in the operation seals automatically.   |                      |                      |                      |  |                      |                      |                      |
| Rail                                  | Solid aluminium profile (technically anodised colourless), for the single-point track measuring 110x78 mm (wxh) and the two-point track measuring 110x98 mm (wxh). Can be painted in any RAL colour if required.  |                      |                      |                      |  |                      |                      |                      |
| Wheels / Trolleys                     | Bearing-mounted with wear-resistant plastic running surfaces that ensure the panels move smoothly and quietly. Single points: max. 240 kg panel weight, two-point: max. 400 kg panel weight.  |                      |                      |                      |  |                      |                      |                      |
| Static behaviour                      | The panels are top-hung in the track and must not be subjected to any external loads.   |                      |                      |                      |  |                      |                      |                      |
| Environmental conditions              | Only suitable for indoor applications. Maximum relative humidity 60%.   |                      |                      |                      |  |                      |                      |                      |

Other specifications available on request. Espero reserves the right to make changes without prior notification. For the most recent version, go to: [www.espero.nl](http://www.espero.nl).

telescopic panel    basic panel    door panel    adjacent panel    communication panel

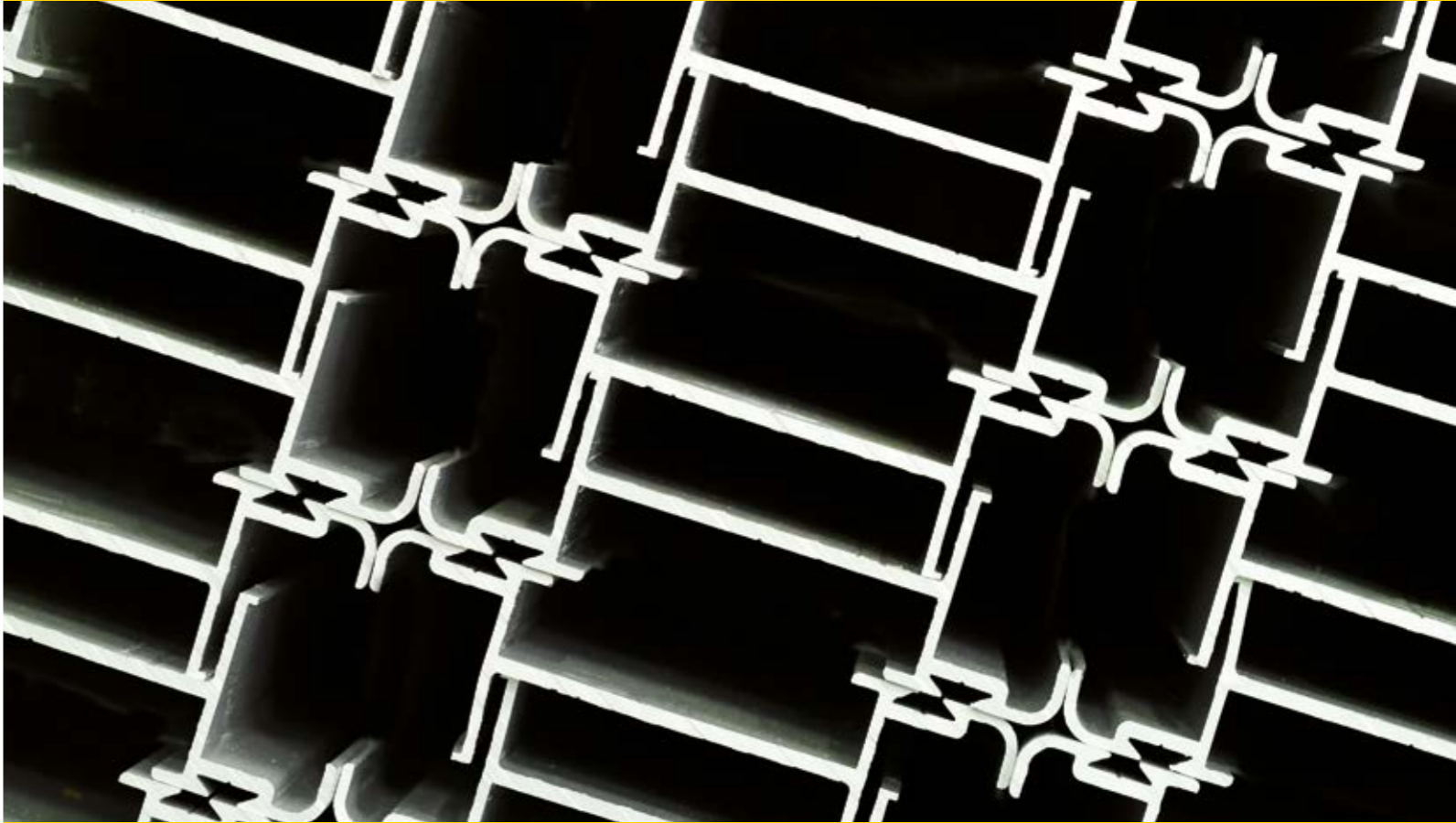


VISIO 100

telescopic panel    basic panel    door panel    adjacent panel    communication panel



VISIO 100 Elite



Espero prioritises customer satisfaction. The production process, modern advanced machinery, the product quality, the expertise and professionalism of our employees; everything has been designed to live up to and, wherever possible, to exceed the expectations of our customers.

By maintaining frequent and intensive contact with clients and suppliers, we can quickly and flexibly respond to new wishes and requirements with innovative products. Our employees work in a pleasant and safe environment in the office, in the factory and on the road. They receive the right support to encourage their personal development and take (additional) training courses in order to guarantee the high quality and excellent service for which Espero is known now and in the future.

ESPERO

# ESPERO

## MOBILE WALLS



The mark of  
responsible forestry  
FSC® C102608

Enquire about our FSC®-certified  
products.

*visiting adress*

**Espero BV**  
Sluisweg 26-28  
5145 PE Waalwijk  
The Netherlands

*postal adress*

**Espero BV**  
Postbus 576  
5140 AN Waalwijk  
The Netherlands

**t** +31 (0)416 338955  
**f** +31 (0)416 332635  
**e** [info@espero.nl](mailto:info@espero.nl)  
**i** [www.espero.nl](http://www.espero.nl)

Ask for the documentation for more  
information about our other wall systems:  
Sonico, Flexio, Visio, Uno & Duplo and  
Skyfold.





**inmind**

256, Kifisias Ave.  
15231 Chalandri, Athens

+30 210 614 1550  
info@inmind.com.gr

**inmind.com.gr**