

inmind

thinking
about project





Collection Alhambra - Product colour Zinc

Collection Palma - Product colour Gunmetal

Unique woven flooring by 2TEC2

Welcome to the world of Palma and Alhambra – where nature's patterns and the vibrant spirit of the Mediterranean come to life in rich and soothing colour palettes. Designed with the Architect & Designer community in mind, these collections are crafted to enliven and captivate spaces in hospitality and workspace areas, creating inviting and engaging environments.

2TEC2 embraces the current trend for more visually stimulating interior design, offering an opportunity to craft beautifully curated spaces through a dynamic interplay of unique patterns and colours in flooring. These collections bring forth a sense of energy and emotion, leaving a lasting impression on all who enter. Truly creating a warm 'home away from home'.

Palma invites you to envision the bliss of a holiday retreat, while Alhambra welcomes you with open arms, radiating warmth and hospitality through refined Moorish floral patterns. These collections are a celebration of the beauty and diversity of nature and our world, inviting you to create spaces that inspire, uplift, and delight.

Interwoven by nature



Interwoven with nature, not only in inspiration but also with the commitment to preserve our world beneath our feet : 2TEC2 Palma and Alhambra collections are Bio-based woven floorings.

Bio-based products are derived from materials of biological origin. The fossil-based fuels in the compound of our yarns in the 2TEC2 top layer are now for 45% replaced with renewable bio-based materials. A meaningful step forward towards more sustainable floorings, increasing our sustainability efforts every day.



2TEC2 woven flooring is 100% recyclable, contains recycled PET content in the acoustic SonoFelt™ underlayer and is designed for circularity.

Acoustic comfort



All 2TEC2 flooring features a high-quality acoustic felt underlay, trademarked SonoFelt™, reducing impact sound by 19dB, thus providing peace of mind for all. This backing provides great acoustics as well as underfoot comfort. It is standard in all collections.



“The passion for fibres and structures, the love of colours and the determination to use eco-conscious materials are the foundations of our company’s philosophy.”

2TEC2 is a 100% Belgian company devoted to designing and producing recyclable high-tech woven flooring. Focused on weaving aesthetic tiles and rolls for the project market, the company aims for a superior performance in quality, functionality and durability.

Alhambra collection

| | |
|---------------------|----|
| Collection overview | 7 |
| Sand | 8 |
| Zinc | 9 |
| Umber | 10 |
| Sienna | 11 |
| Emerald | 12 |
| Cyan | 13 |
| Gunmetal | 14 |
| Carmine | 15 |
| Malachite | 16 |
| Charcoal | 17 |

Palma collection

| | |
|---------------------|----|
| Collection overview | 19 |
| Sand | 20 |
| Zinc | 21 |
| Umber | 22 |
| Sienna | 23 |
| Emerald | 24 |
| Cyan | 25 |
| Gunmetal | 26 |
| Carmine | 27 |
| Malachite | 28 |
| Charcoal | 29 |



Alhambra

Collection overview

Inspired by the refined expression of beauty and emotion found within the well-known Moorish sun-soaked Alhambra palace, this pattern plays hide and seek with intricate mosaics and vegetal motifs.

The Arabic name 'al-Hamra' means 'the red fortress', celebrating nature's dance of light and sun on warm evenings. The colour palette varies from the azure hues of the Andalusian sky to the earthy warmth of sienna and umber tones in the surrounding hills.

Celebrating the art of discovery, the Alhambra motif beckons with its delicate filigree of ornamental details and ever-unfolding details, inviting you on a journey of exploration and delight. Each glance reveals new intricacies, weaving together echoes of history and whispers of elegance.

Elevate your space with the Alhambra Collection and let the spirit of Moorish grandeur and exquisite craftsmanship adorn your interiors with grace and refinement.



Alhambra Sand



Alhambra Zinc



Alhambra Umber



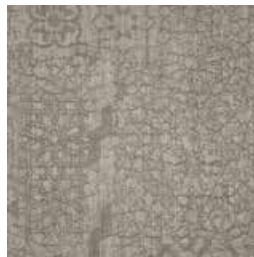
Alhambra Sienna



Alhambra Emerald



Alhambra Cyan



Alhambra Gunmetal



Alhambra Carmine



Alhambra Malachite



Alhambra Charcoal



Sand

Alhambra



With its blond granular texture, intricately formed over thousands of years, this colour features delicate arabesques, and embodies the warm sandy tones and earthy browns found in the landscapes surrounding ancient citadels.

This Alhambra Sand design gives a feeling of timeless neutrality to your interior.



Zinc

Alhambra



Seamlessly blending cool, metallic tones with subtle hints of fresh whites and greys, this design exudes ethereal beauty and modern simplicity with traditional elegance.

The Alhambra Zinc colour brings a gentle and mild breeze to your room, alluding to the tranquil oasis of an indoor patio.



Umber

Alhambra



Umber has a deep-rooted history as one of the original pigments used in the creation of art, first seen in Ajanta caves as early as 200 BC.

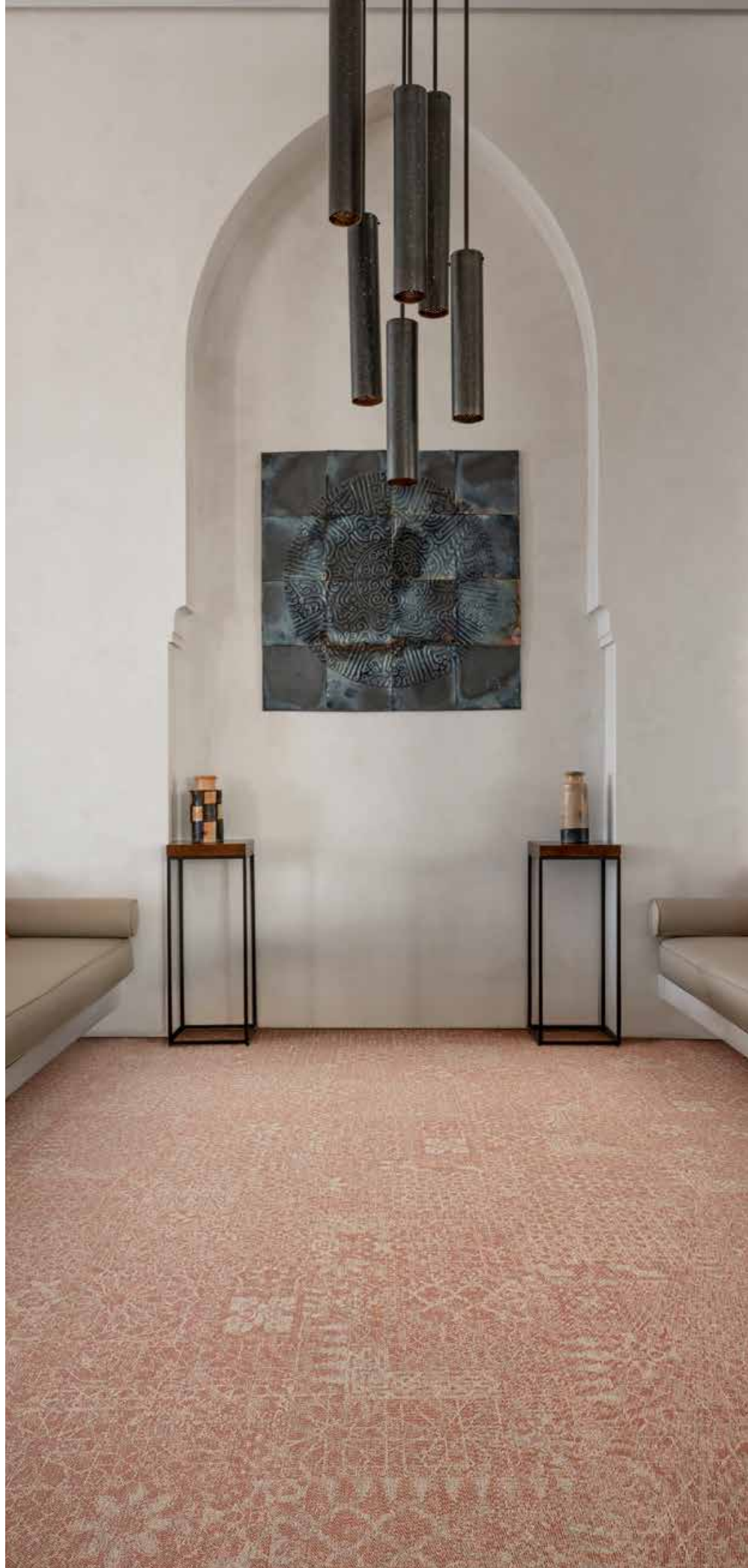
With the intense rich tones of dark earth and burnt yellow, the radiant Alhambra Umber design commands attention and evokes a feeling of both opulence and warmth.

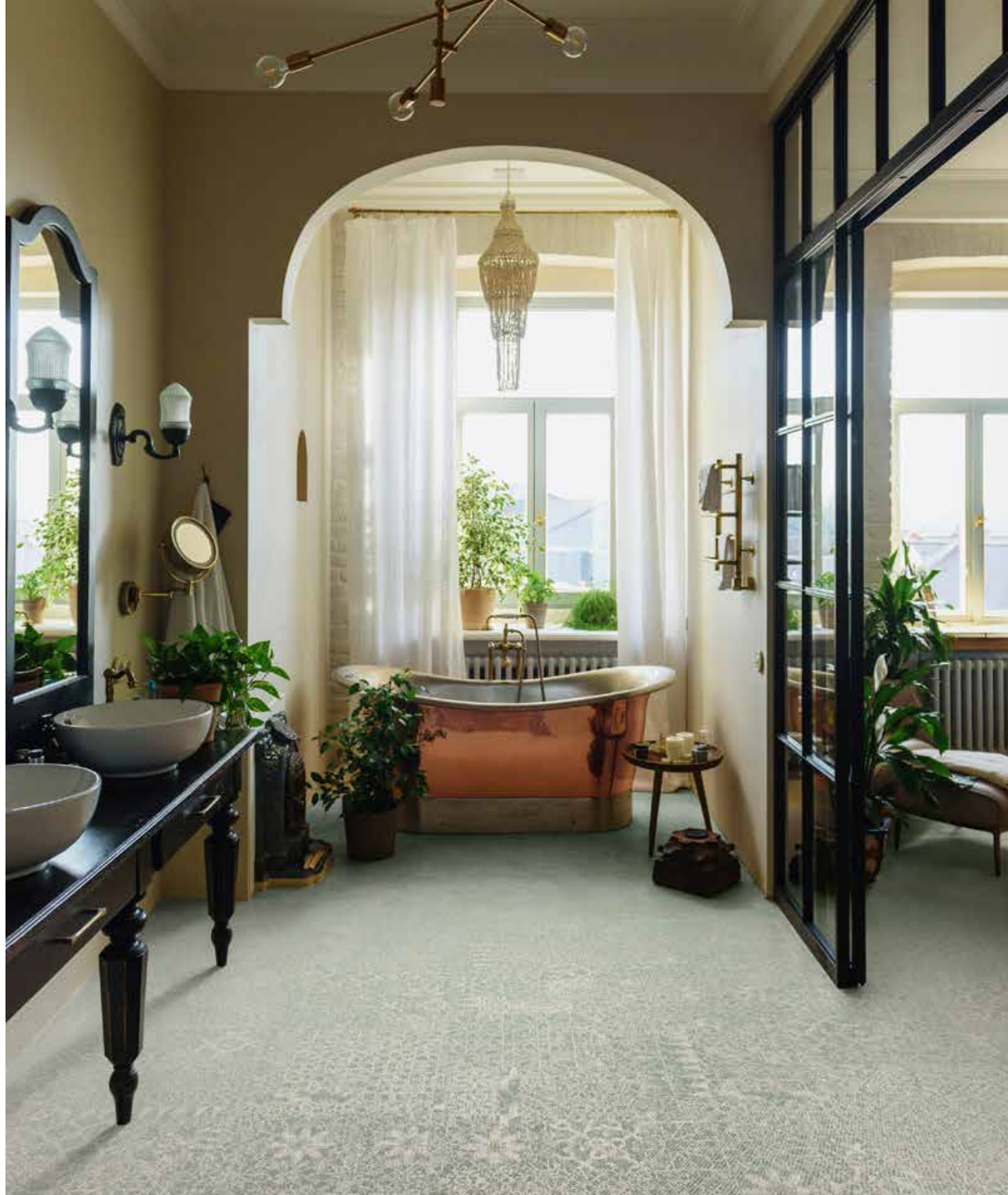
Sienna



Since the Renaissance, the sun-baked clay tones of Sienna have been widely used to create a warm and welcoming atmosphere.

As a serenade to this tone, woven into intricate patterns inspired by Islamic ornamental craftsmanship, this Alhambra Sienna design carries a rustic charm and classic beauty.





Emerald

Alhambra



Once the favoured gemstone of Cleopatra, the Emerald has been the centrepiece of royal adornments for centuries. With its vibrant, lush tones and elaborate patterns, Alhambra Emerald embodies richness and elegance, transforming your interior into a sanctuary of natural allure.



Cyan



Alhambra

Often described as the colour of the sky on a clear day, Cyan is bright, bold and full of vitality. This fresh and invigorating design creates a modern and energetic atmosphere, while the cool undertones bring a sense of calmness and serenity, reminiscent of a tranquil oasis.

With Alhambra Cyan, you invite a breath of fresh air into your space.



Gunmetal

Alhambra



The sleek and sophisticated design of Alhambra Gunmetal has a cool, modern feel and embodies a sense of strength and refinement. Pairing industrial elegance with contemporary metallic accents adds a touch of urban flair and timeless charm to any interior space.



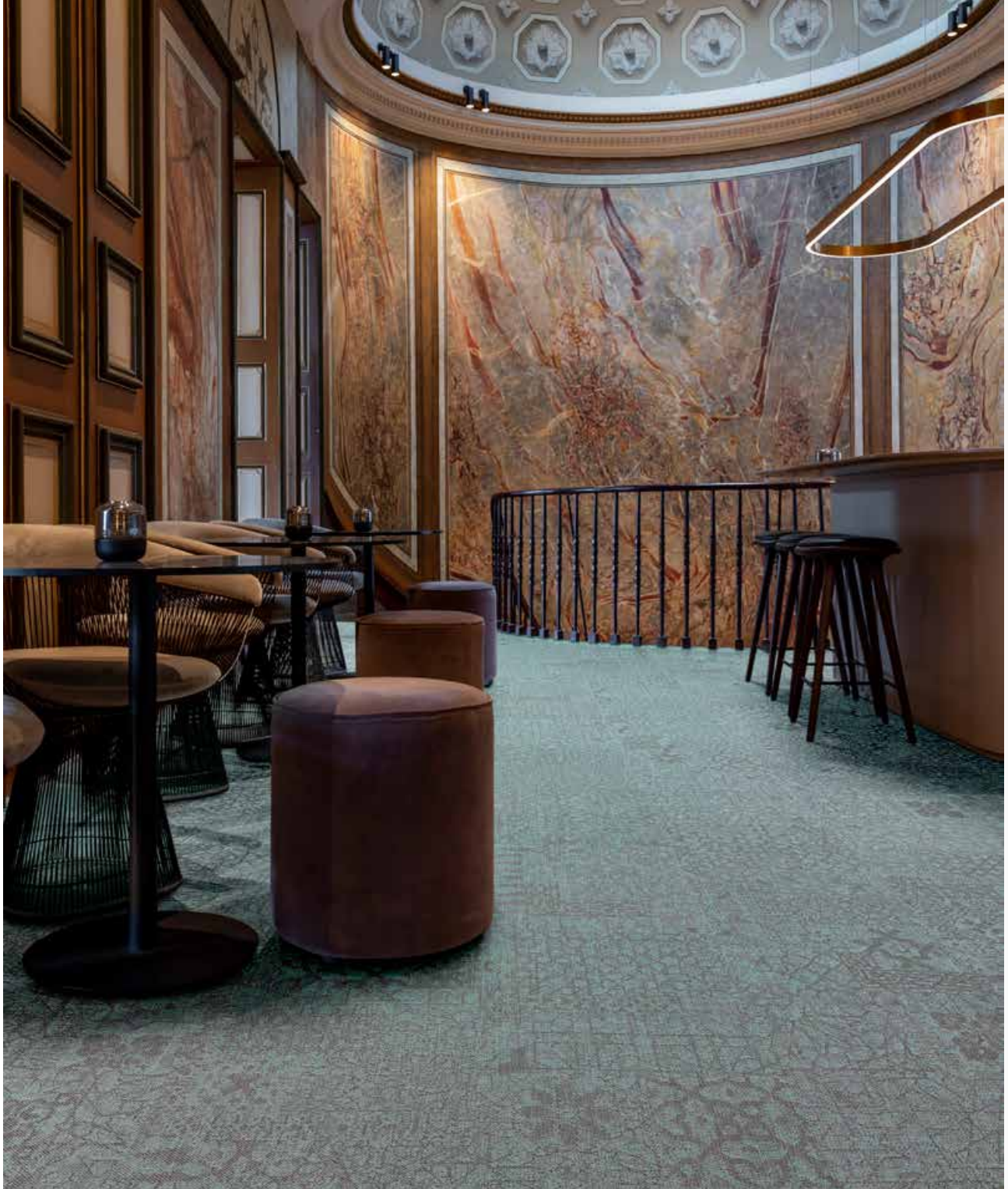
Carmine



Alhambra

Add a touch of drama with this burnt orange colour, reminiscent of a sunset caressing the carmine walls of the casbah. With the striking combination of this deep peach and the vibrant motif of intricate patterns expressing floral elements, Alhambra Carmine ignites passion and excitement in any room.

Let this design infuse your space with warmth and vitality.



Malachite

Alhambra



The striking blue-green colour of this Alhambra Malachite design is inspired by the semiprecious stone Malachite and features patterns derived from the natural mineral's intricate markings.

True to its supposed properties of healing and transformation, the combination of innate beauty and regal opulence will add depth and grandeur to your interiors.

Charcoal



Imagine the rich black of burnt wood or coal, and the steely exterior of a medieval Moorish fortress.

The intense and formidable contrast of these cool yet smoky tones exudes a sense of strength and power, making a bold statement in any room. Alhambra Charcoal fills the space with a sense of mystery and intrigue.





Palma

Collection overview

Embrace the serene oasis of palm tree leaves beneath your feet and let their gentle sway evoke a feeling of relaxation and sophistication.

The Palma Collection captures the essence of tropical elegance, bringing a sense of natural allure to any space. The Latin word "palma" holds a rich history and symbolism, originally referring to the palm of the hand as the key to life. Palm branches stood for victory and honour in ancient Rome. Over time, the palm tree became associated with

peace, prosperity, and tropical paradise. Its graceful leaves and resilient nature have inspired artists and designers throughout the ages, carrying an exotic whisper of eternal life.

Palma exudes warm elegance, beauty, and tranquility, yet is at the same time vibrant and visually engaging. Create a lively space with this refined masterpiece design, crafted by nature.



Palma Sand



Palma Zinc



Palma Umber



Palma Sienna



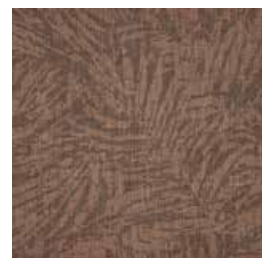
Palma Emerald



Palma Cyan



Palma Gunmetal



Palma Carmine



Palma Malachite



Palma Charcoal

Palma

Sand



Inspired by the serenity and warmth of sun-kissed shores, this natural design combines golden tones with soft dusky hues.

With a unique blend of coastal elegance and Mediterranean flair, Palma Sand creates a relaxing oasis in any space.





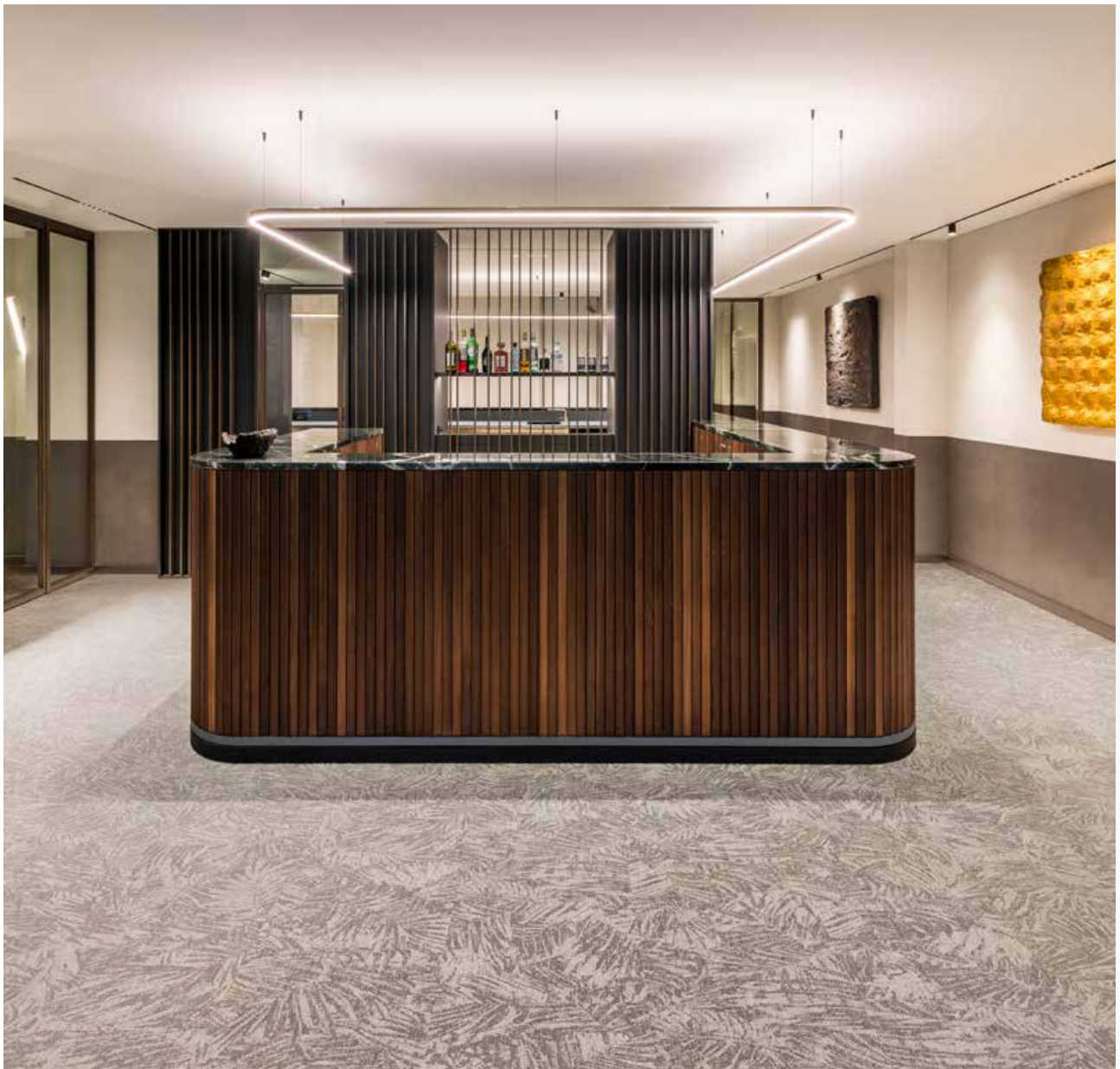
Zinc



Palma

Just like a cool breeze, this ethereal misty grey breathes new life into your interior by creating a light and airy ambience.

The silvery sheen finish of Palma Zinc highlights the refined outline of the palm tree leaves, resulting in a contemporary yet timeless aesthetic with a minimalist appearance.



Umber

Palma



Umber, a hue steeped in the earth's embrace, whispers of distant horizons. It is the colour of rich soil kissed by the sun's warmth, of rugged mountains bathed in twilight's glow.

Palma Umber orchestrates an intricate dance of light and shadow upon the tropical forest floor, whispering through the rustling leaves and the shadows of the palms.

Sienna



This warm shade alludes to 'terra di Siena', referring to the beautiful city of Siena in Tuscany where the typical reddish-brown earth pigment was originally mined and produced.

With its vivid tones and graceful patterns, the Palma Sienna design inspires a harmonious and inviting ambience paired with the zest of the Mediterranean.





Emerald

Palma



In Feng Shui culture, indoor palms are used to improve equilibrium and bring calmness. Palma Emerald combines the lush, gentle sway of palm leaves with the vibrant glow of the precious Emerald gemstone, prized for its rich green colour, transparency and rarity.

Your room will become a haven of peace and enchantment.

Cyan

Palma



Inspired by the magic of light turquoise-blue waters and breathtaking azure skies, this chic botanical design in blue soothes the senses and calms the mind.

Let the gentle ripples of these aqua tones in Palma Cyan create a serene ambience in your home and contribute to a bright and tranquil aesthetic.



Gunmetal

Palma



Palma Gunmetal is inspired by the dark blue-grey metal used for making cannons and guns in the 12th century. We have paired this deep metallic sheen colour with a cooler grey tone to fully enhance the serenity and grace of the Palma floor design.

This results in a fresh take on chic modernity with coastal vibes.



Carmine



Palma

Palma Carmine is reminiscent of bright tropical blooms, and an evening sky ablaze with the deepest red and orange from the last rays of sunlight.

Its powerful pop of colour paired with the soothing design of lush foliage, creates a dynamic and visually captivating ambience in any area.

Malachite

Palma



Allow the illusion of flourishing foliage and shimmering waters to come alive in your home. The rich oxidized blue-green tones of Palma Malachite and the mesmerising exotic design will elevate your interior to an entrancing level.

In addition to its vibrant and aesthetic appeal, the malachite mineral has supposed healing properties and spiritual significance in various cultures throughout the world. Immerse yourself in this verdant oasis of well-being.



Charcoal

Palma



Embrace the drama with a sense of understated luxury and versatility. Serving as a stylish and seductive backdrop to any room, the bewitching cinder tones and chic botanical design of Palma Charcoal make a striking statement, adding an element of sophistication and deep perspective to your space.



Bio based

- Bio-based top layer



Strong and long-lasting

- Extremely robust
- Resists office chairs & heavy traffic
- Long life span



Hygienic and easy to clean

- Stain resistant & waterproof
- Maintenance with clear water, no chemicals
- Mold-free & anti-allergic properties



Acoustic sound absorption

- 70% walking noise reduction
- 19 dB impact sound reduction
- $\alpha_w = 0,15$ acoustic sound absorption



Sustainable footprint

- Felt backing made of recycled PET
- Designed for circularity: 100% recyclable
- Suitable for projects according to BREEAM, LEED & WELL Building Standard®



High quality & high comfort

- 100% designed & made in Belgium
- Excellent underfoot comfort



Tile
50 x 50 cm - 19.69" x 19.69"



Roll
ca. 200 cm - ca. 6'7"

Contact your 2TEC2 agent for details or MockUp.

The colours in this brochure may differ from the actual colors. This can be due to technical printing differences. Please request a sample for an accurate representation.





inmind

256, Kifisias Ave.
15231 Chalandri, Athens

+30 210 614 1550
info@inmind.com.gr

inmind.com.gr